



Memorial Academy, Botwood

#EveryBreakfastCounts

ANNUAL REPORT | 20 | 21 22



Kids Eat Smart
Foundation

NEWFOUNDLAND & LABRADOR

A MESSAGE FROM THE CHAIR AND EXECUTIVE DIRECTOR

It is with gratitude that we share with you the positive, direct impact you are having on the lives of children in Newfoundland and Labrador. This year's report outlines the key accomplishments during 2021-2022, and everyone who make our Kids Eat Smart Clubs possible.

Serving over 38,000 meals in our 275 Kids Eat Smart Clubs in Newfoundland and Labrador, *every school day*, is a monumental task! We can only accomplish this with the generosity of our partners and donors, along with the dedication of our principals, club coordinators, teachers, staff, and volunteers who help our children learn, grow and be their very best.

The last two years have been such a journey and this school year was full of memorable moments, lessons learned, and key highlights. We started the school year with a sense of normalcy, knowing we could serve every day, and then winning \$100,000 in a national campaign, capturing the votes and hearts of people in our province and across the country. Your support during our most successful province-wide Radiothon this Fall provided much needed financial support to our Kids Eat Smart Clubs.

Through your support, we continue to find a way to serve and provide the essential support to our breakfast clubs in our schools and food to our community centres.

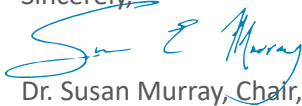
We are grateful for the continued support of the Government of Newfoundland and Labrador for their ongoing commitment to our program and to our Partners, who through their sponsorship and financial support, help provide stability for continued growth.

As we continue to develop promising relationships for the future of the children of our province, it is through our community organizations and individual donors that our children start their school days well-nourished and ready to learn.

Together, with your support, we ensure every school age child in Newfoundland and Labrador has access to food at school, at no cost to families, creating opportunities for a stronger, brighter future.

On behalf of the children who have food because of you, we thank you.

Sincerely,



Dr. Susan Murray, Chair, Board of Directors



Celina Stoyles, Executive Director



***Every Breakfast Counts.
Every Child Counts.
You Count.***

BOARD OF DIRECTORS & STAFF

Board Members

Dr. Susan Murray, Chair
Senior Consultant, Clearpath Leadership

Wendy Snow, Vice Chair
Manager of Recruitment, Office of Health Recruitment and Retention, Government NL

Janice Butt, Treasurer
Controller, Lower Churchill, NL Hydro

David Young, Secretary
Manager, Major Projects, Allnorth Consultants Limited

Janine Browne
Director of Business Development and Sales, PAL Airlines

Dr. Jeff Critch
Pediatrician, Janeway Children's Hospital

Shelley Sullivan
*Regulatory Affairs and Public Policy Supervisor,
Canada East Operations, ExxonMobil Canada Ltd.*

Allison M. Whelan
Partner, Stewart McKelvey

Emad Rizkalla
Founder and CEO, Bluedrop ISM

Katharine Fagner
Financial Planner, TD Wealth Financial Planning

Nicole Parsons
MP Ventures & Trusts

Staff

Celina Stoyles
Executive Director

Jennifer Yetman
Director of Communications and Fund Development

Cora Turnbull
Financial Officer

Heather Russell
Receptionist/Administrative Assistant

Lisa Knee
Events and Fundraising Coordinator

Nickie Shanks
Regional Coordinator (Avalon West, Burin & Vista)

Evelyn Francis
Regional Coordinator (Central)

Natasha Hynes
Regional Coordinator (Western, Northern Peninsula & Labrador)

Vision

That every school age child in Newfoundland and Labrador attends school well nourished to be ready to learn.

Mission

Kids Eat Smart Foundation Newfoundland and Labrador partners with schools, communities, volunteers and sponsors to set up and support nutritious food programs called Kids Eat Smart Clubs, organized by volunteers for school age children throughout Newfoundland and Labrador.

Values

- Children need nutritious food to be healthy in order to grow and learn;
- The school system must be involved in meeting the needs of the whole child;
- Children require a community response – a partnership of family, school and community for their healthy development;
- Everyone has a contribution to make and the Foundation will honor all forms of contribution;
- All children must have equal opportunity to participate in Kids Eat Smart Clubs.

YEAR IN REVIEW

2021-2022

Walk for Breakfast

St. James Elementary, Port Aux Basques



Bell Let's Talk Day

Xavier Junior High, Deer Lake



Kids Eat Smart Radiothon

Kids Eat Smart Foundation Office, St. John's



NL Hydro Energy Breakfast

NL Hydro Office, Holyrood



Walmart Campaign

Walmart, Clarendville



Breakfast Club Volunteers

Topsail Elementary Volunteers



Breakfast Blitz

Peacock Primary, Happy Valley – Goose Bay



BREAKFAST AT HOME EMERGENCY FUND

Supporting school age children and youth during the pandemic

From January to June 2022, when schools were closed, it is through a generous gift from Breakfast Club of Canada, through the Government of Canada's Emergency Food Security Fund, that in addition to our community centre outreach program, our Team developed and initiated a Breakfast at Home Emergency Fund that provided school age children and youth with access to food at home, at no cost to families.

Combined, we were able to assist 4,116 families and disbursed \$417,670. It is through the support of our partners and donors that during this challenging time we are able to continue to provide food to children and their families who are most vulnerable. We simply could not have done this without you.

To our school communities, community centres, local grocery stores throughout NL, their employees and volunteers who mobilized in helping us to find a way to serve – on behalf of our school age children and youth who have had food because of you – we thank you!

BREAKFAST AT HOME EMERGENCY FUND

JANUARY – JUNE 2022

4,116

FAMILIES

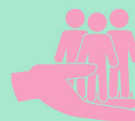
received grocery gift cards or hampers totaling \$417,670 to provide Breakfast at Home to school age children and youth who heavily rely on food at school



\$417,670

TOTAL SUPPORT

in financial assistance provided to school age children and youth to ensure access to food, at no cost to families.



FUNDING PROVIDED BY



“

"Thank you for your recent donations of gift cards to our students and families that could benefit during this time."

“

"We are so grateful for the support afforded to our students and families during this most recent school disruption during the pandemic. Please accept our sincerest thanks!"

“

"You are truly helping make an impact on our community. Thank you for your support."

YOUR GIFTS AT WORK

2021-2022



Lakewood Academy, Glenwood, serves breakfast 5 days a week to 202 children.



St. Paul's Intermediate, Gander, serves breakfast 5 days a week to 175 children.



French Shore Academy, Port Saunders, serves breakfast 5 days a week to 125 children.



St. Thomas Aquinas, Port au Port, serves breakfast 5 days a week to 99 children.



Holy Redeemer Elementary, Spaniard's Bay, serves breakfast 5 days a week to 250 children.



Whitbourne Elementary, Whitbourne, serves breakfast 5 days a week to 80 children.

YOUR GIFTS AT WORK

2021-2022



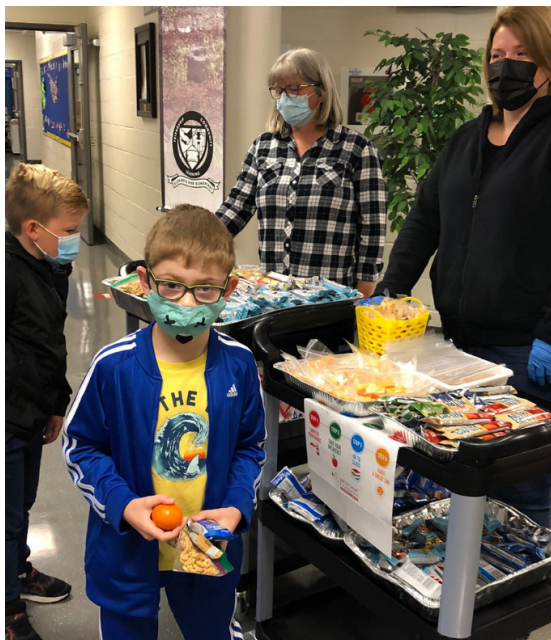
Labrador Straits Academy, L'Anse au Loup, serves breakfast 2 days a week to 142 children.



École Boréale, Happy Valley-Goose Bay, serves breakfast 5 days a week to 28 children.



Newtown Elementary, Mount Pearl, serves breakfast 3 days a week to 150 children.



Elizabeth Park Elementary, Paradise, serves breakfast 3 days a week to 350 children.

STATEMENT OF OPERATIONS

Year Ending July 31, 2022

Revenue	2022	2021
Government of Newfoundland and Labrador	855,744	630,434
Corporate/Fundraising/Donations/Designated Gifts	737,564	880,994
COVID-19 Food4Kids Campaign	421,801	20,000
Interest	3,403	4,311
Total	2,018,512	1,535,739
Expenses	2022	2021
Grants to KES Clubs	777,344	773,407
Program & Development/Administration	527,584	507,385
COVID-19 Food4Kids Campaign	421,801	12,373
Fundraising Expenses	3,804	
Other Operating Expenses	172,965	159,923
Public Education	101,391	45,238
Travel	5,500	1,157
Capacity Building	8,123	36,256
Total	2,018,512	1,535,739

A complete copy of the Foundation's audited financial statements can be found at www.kidseatSMART.ca



Labrador

Western

Central

Eastern

Total

Clubs	22	53	61	115	251
Community Centres (Homework Havens)	1	6	3	14	24
Total Clubs	23	59	64	129	275

KIDS EAT SMART CLUBS

2021 - 2022

LABRADOR

A. P. Low Primary
Amos Comenius Memorial
B.L. Morrison
Bayside Academy
Ecole l'ENVOL
Ecole Boreale*
Henry Gordon Academy
J.C. Erhardt Memorial School
J.R. Smallwood Middle School
Jens Haven Memorial
Labrador Straits Academy
Lake Melville School
Mealy Mountain Collegiate
Menihik High School
Mud Lake School
Northern Lights Academy
Peacock Primary
Queen of Peace Middle School
St. Lewis Academy
St. Mary's All Grade
St. Peter's School
William Gillett Academy
YMCA Central Labrador*

WESTERN

All Saints All Grade*
Bay St George YMCA
Bayview Academy
Belanger Memorial
Bonne Bay Academy*
Burgeon Academy
Canon Richards High School
Cloud River Academy
Community Youth Network
Corner Brook Intermediate
Corner Brook Regional High
E.A. Butler All Grade
Eastside Elementary
Ecole C.C. Loughlin Elementary
Ecole Notre Dame du Cap
Ecole St. Anne
Elwood Elementary
Elwood Regional High
French Shore Academy
Grandy's River Collegiate
Gros Morne Academy
H.G. Fillier Academy
Hampden Academy
Holy Cross All Grade
Immaculate Heart of Mary
J. J. Curling Elementary
Jakeman All Grade
James Cook Memorial
LeGallais Memorial
Long Range Academy
Lourdes Elementary
Main River Academy
Mary Simms All Grade*
Our Lady of the Cape
Pasadena Academy
Pasadena Elementary
Pathfinder Learning Centre CB
Pathfinder Learning Centre Step
Piccadilly Central High
Sacred Heart Elementary
St. Boniface All Grade
St. James All Grade
St. James Elementary
St. James Regional High
St. Michael's Elementary

St. Peter's Academy
St. Simon & St. Jude Academy
St. Thomas Aquinas
Stephenville Crossing Library
Stephenville Elementary
Stephenville High
Stephenville Middle
Stephenville Primary
Templeton Academy
Truman Eddison Memorial
Viking Trail Academy
White Hills Academy
Vine Place Community Centre
Xavier Junior High

CENTRAL

A. R. Scammell Academy
Avoca Collegiate
Bay D'Espoir Academy
Botwood Boys & Girls Club
Botwood Collegiate
Brian Peckford Primary
Cape John Collegiate
Centreville Academy
Copper Ridge Academy
Cottrell's Cove Academy
Dorset Collegiate
Exploits Community Centre
Exploits Valley High
Exploits Valley Intermediate
Fitzgerald Academy
Fogo Island Central Academy
Forest Park Primary
Gander Academy
Gander Collegiate
Gander Elementary
Gill Memorial Academy
Glovertown Academy
Green Bay South Academy
Greenwood Academy
Helen Tulk Elementary
Hillside Elementary
Hillview Academy
Holy Cross School Complex
Indian River Academy
Indian River High
J.M. Olds Collegiate
Jane Collins Academy
John Watkins Academy
King Academy
Lakeside Academy
Lakewood Academy
Leading Ticks Primary
Leo Burke Academy
Lewisporte Academy
Lewisporte Collegiate
Lewisporte Intermediate
Lumsden Academy
Memorial Academy
MSB Regional Academy
New World Island Academy
Pearson Academy
Phoenix Academy
Point Leamington Academy
Riverwood Academy
Smallwood Academy
Sprucewood Academy
St. Anne's Conne River
St. Anne's Jr & Sr High
St. Josephs Elementary
St. Paul's Intermediate

St. Peter's Academy
St. Stephen's All Grade
Twillingate Island Elementary
Valmont Academy
Victoria Academy
William Mercer Academy
Woodland Primary
Youth (2000) Centre

EASTERN - RURAL

Acreman Elementary
All Hallows Elementary
Amalgamated Academy
Anthony Paddon Elementary
Ascension Collegiate
Baccalieu Collegiate
Bay Roberts Primary
Bishop White School
Cabot Academy
Carbonear Academy
Carbonear Collegiate
Catalina Elementary
Christ the King School
Clarenville High School
Clarenville Middle School
Crescent Collegiate
Discovery Collegiate
Donald C. Jamieson Academy
Dunne Memorial Academy
Fatima Academy
Fortune Bay Academy
Heritage Collegiate
Holy Family Elementary
Holy Name of Mary Academy
Holy Redeemer School
John Burke High
Lake Academy
Laval High School
Main Street Youth Centre
Marystown Central High
Matthew Elementary
Pearce Junior High
Perlwin Elementary
Persalvic Elementary
Random Island Academy
Riverside Elementary School
Sacred Heart Academy
Smallwood Crescent Com Cent
Southwest Arm Academy
St. Anne's Academy
St. Catherine's Academy
St. Francis School
St. Joseph's Academy
St. Joseph's All Grade
St. Lawrence Academy
St. Mark's School
St. Peter's Elementary (UIC)
Swift Current Academy
Tricentia Academy
Tricon Elementary
Whitbourne Elementary
Woodland Elementary

EASTERN - URBAN

Admirals Academy
Baltimore School
Beachy Cove Elementary
Beaconsfield Junior High
Bishop Abraham ElementaryV
Bishop Feild Elementary
Brother Rice Junior High

Chalker Place Neighborhood Centre
Cowan Heights Elementary
District School
East Point Elementary
Ecole Des Grands-Vents*
Ecole Rocher-Du-Nord*
Elizabeth Park Elementary
Eric/McKay Neighborhood Centre
First Light St. John's Friendship Centre
Frank Roberts Junior High
Froude Avenue Com. Centre
Gonzaga High School
Goulds Elementary
Hazelwood Elementary
Holy Cross Elementary
Holy Family Elementary
Holy Heart Regional High
Holy Spirit High
Holy Trinity Elementary
Holy Trinity High*
Immaculate Conception
Larkhall Academy
Leary's Brook Junior High
MacDonald Drive Elementary
MacDonald Drive Junior High
MacMorran Com. Centre
Mary Queen of Peace
Mary Queen of the World
Mobile Central High
Morris Academy
Mount Pearl Intermediate
Mount Pearl Senior High
Newtown Elementary*
O'Donel High School
Paradise Elementary
Paradise Intermediate*
Parkside Neighborhood Centre
Prince of Wales Collegiate
Queen Elizabeth Reg High
Rabbittown Community Centre
Rennie's River Elementary
Roncalli Elementary
Roncalli Central High
St. Andrew's Elementary
St. Augustine's Elementary
St. Bernard's Elementary
St. Edward's School
St. Francis of Assisi School
St. George's Elementary
St. John Bosco
St. John's Boys & Girls Club
St. Kevin's High School
St. Kevin's Junior High
St. Matthew's Elementary
St. Michael's High
St. Paul's Junior High
St. Peter's Elementary (MP)
St. Peter's Junior High
St. Teresa's School
Stella Maris Academy
Thrive Youth Network
Topsail Elementary
Upper Gullies Elementary
Vanier Elementary
Villa Nova Junior High
Virginia Park Community Centre
Wabana Boys & Girls Club
Waterford Valley High
West Heights Neighbourhood Centre

*New KES Club 2021-2022

KIDS EAT SMART PARTNERS

2021-2022



**Kids Eat Smart
Foundation**
NEWFOUNDLAND & LABRADOR

During the school year 2021-2022
we served more than
5.4 MILLION MEALS

Thanks to the commitment of our generous and dedicated Partners, we provide school age children in our province with access to nutritious food so they are well nourished and ready to learn.

Together, we are making a direct impact on the lives of school age children in our province!

SUSTAINING PARTNER	NATIONAL PARTNERS	PLATINUM PARTNERS	GOLD PARTNER
SILVER PARTNERS			
BRONZE PARTNERS			

Beachy Cove Elementary,
Portugal Cove-St. Phillip's
serves breakfast

**FIVE
DAYS A
WEEK**

to

**100
CHILDREN**

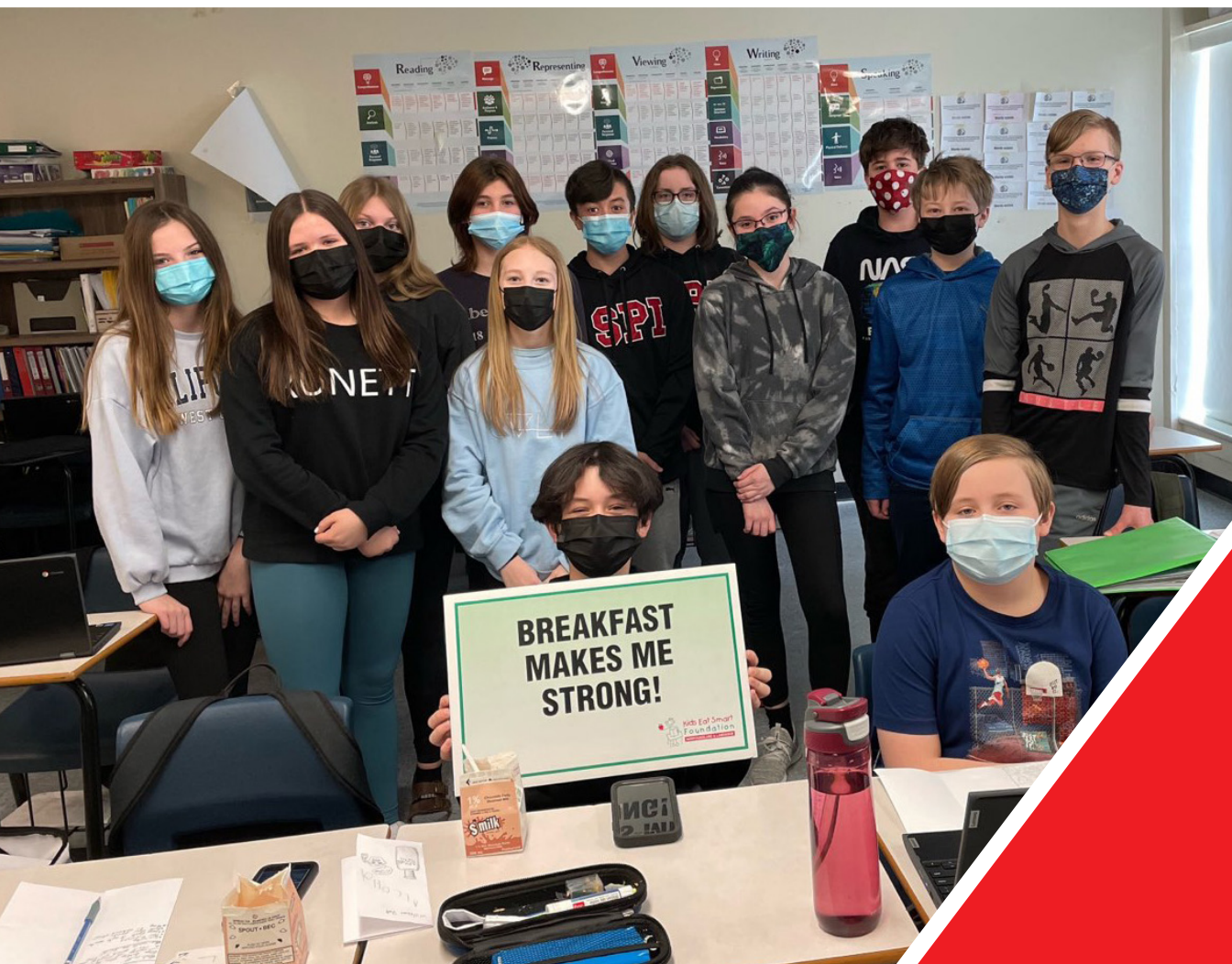


EVERY
SCHOOL
DAY

we
serve
over

38,000
MEALS

to school age children in
Newfoundland and Labrador



**Kids Eat Smart
Foundation**
NEWFOUNDLAND & LABRADOR

55 Elizabeth Avenue, Suite 201
St. John's | NL | A1A 1W9

T: (709) 722-1996 | TF: 1-877-722-1996
F: (709) 722-7250 | E: info@kideatsmart.ca
kideatsmart.ca



@KidsEatSmartNL

Charitable Registration Number: 139820864RR0001

St. Paul's Intermediate, Gander
serves breakfast
FIVE DAYS A WEEK
to **175 CHILDREN**